

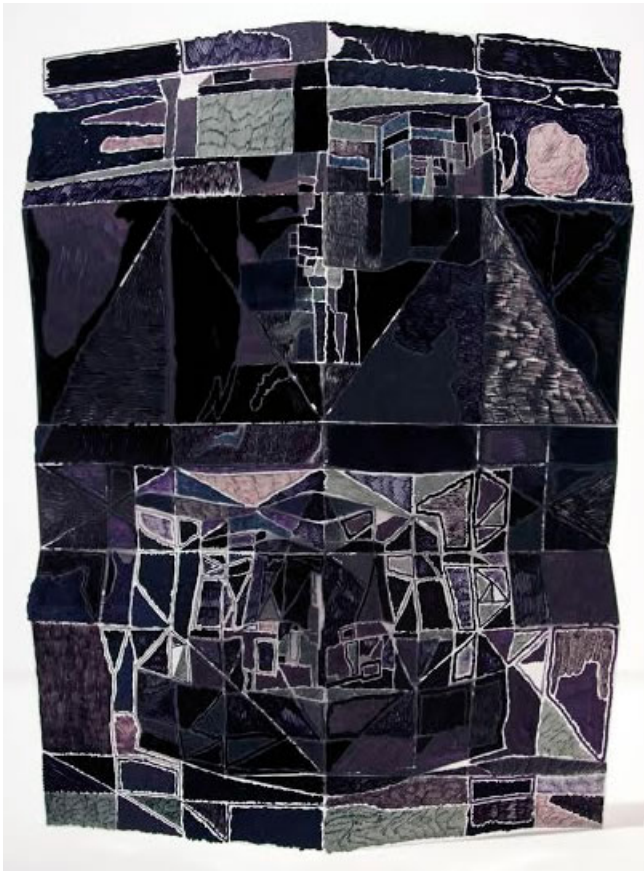
HAW/CONTEMPORARY - PRESS RELEASE

Anthony Baab - *Ummagumma*

May 30 - July 12, 2014

Opening Reception - Friday, May 30, 5-9 PM

"My aim in these works was to create a living, moving image. I began with a photograph of a folded sheet of glossy paper that was printed, re-folded, and re-photographed many times. The process later required drawing to further animate the graphic content of the photograph. Further on, sculptural forms push the photograph into three-dimensional space, only to be compressed into a flat image again. I returned to drawing in the stipple drawings in order to introduce a slow, kinesthetic means of image making that evokes sci-fi and fantasy art from the 70's and M.C. Escher's morphing landscapes. Exhibited together, these works and their conditional mutations and adaptations lead to something altogether new."



Anthony Baab is an artist and adjunct instructor living in Kansas City who studied painting and printmaking at the Kansas City Art Institute (2004) before obtaining an MFA in Interdisciplinary Art from Cornell University (2009). Representing a wide range of media, his recent work consists of photographs, sculptures, and large-scale models that explore Minimalist notions of self-reflexivity. He is a Charlotte Street Award Recipient (2006) who has participated in solo and group shows through various organizations including: Grand Arts, Nelson-Atkins Museum of Art, Nerman Museum of Contemporary Art, and Tompkins Projects. His work is included in several permanent collections including The Nelson-Atkins Museum of Art, Nerman Museum of Contemporary Art, and The Microsoft Collection. Publications include *10: Ten Years Fifty Six Artists*, (Stacy Switzer), "No Static

Models For This Artist", Kansas City Star (Alice Thorson), and "Nonbeing There", cover story for The Pitch Kansas City (Tracy Abeln).

Gallery Hours: 9-5 Tuesday through Friday, 12-5 Saturday

HAW/CONTEMPORARY - PRESS RELEASE

Press Contact

Emily Eddins

816.842.5877

emily@hawcontemporary.com